

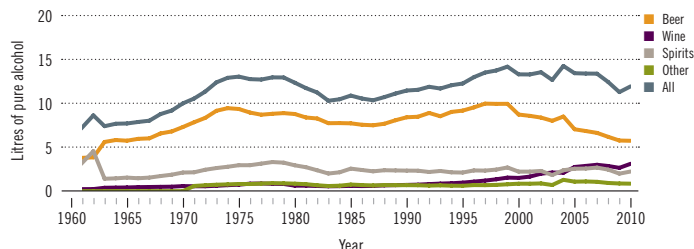
Czech Republic

Total population: 10 554 000 > Population aged 15 years and older (15+): 86% > Population in urban areas: 74% > Income group (World Bank): High income

ALCOHOL CONSUMPTION: LEVELS AND PATTERNS

Recorded alcohol per capita (15+) consumption, 1961–2010

Data refer to litres of pure alcohol per capita (15+).



Recorded alcohol per capita (15+) consumption (in litres of pure alcohol) by type of alcoholic beverage, 2010



Alcohol per capita (15+) consumption (in litres of pure alcohol)

	Average 2003–2005	Average 2008–2010	Change
Recorded	11.8	11.8	→
Unrecorded	1.5	1.2	↘
Total	13.3	13.0	→
Total males / females		18.6 / 7.8	
WHO European Region	11.9	10.9	

Total alcohol per capita (15+) consumption, drinkers only (in litres of pure alcohol), 2010

Males (15+)	20.2
Females (15+)	9.0
Both sexes (15+)	14.6

Prevalence of heavy episodic drinking* (%), 2010

	Population	Drinkers only
Males (15+)	53.5	58.4
Females (15+)	24.9	28.8
Both sexes (15+)	38.9	43.6

*Consumed at least 60 grams or more of pure alcohol on at least one occasion in the past 30 days.

Abstainers (%), 2010

	Males	Females	Both sexes
Lifetime abstainers (15+)	2.5	2.6	2.6
Former drinkers* (15+)	5.8	10.8	8.4
Abstainers (15+), past 12 months	8.3	13.4	10.9

*Persons who used to drink alcoholic beverages but have not done so in the past 12 months.

Patterns of drinking score, 2010

LEAST RISKY < 1 2 3 4 5 > MOST RISKY

HEALTH CONSEQUENCES: MORTALITY AND MORBIDITY

Age-standardized death rates (ASDR) and alcohol-attributable fractions (AAF), 2012

	ASDR*		AAF (%)	
Liver cirrhosis, males / females	23.7	9.4	77.7	72.3
Road traffic accidents, males / females	12.9	4.0	36.3	15.0

*Per 100 000 population (15+).

Years of life lost (YLL) score*, 2012

LEAST < 1 2 3 4 5 > MOST

*Based on alcohol-attributable years of life lost.

Prevalence of alcohol use disorders and alcohol dependence (%), 2010*

	Alcohol use disorders**	Alcohol dependence
Males	8.5	4.5
Females	1.3	0.7
Both sexes	4.8	2.6
WHO European Region	7.5	4.0

*12-month prevalence estimates (15+).

**Including alcohol dependence and harmful use of alcohol.

POLICIES AND INTERVENTIONS

Written national policy (adopted/revised) / National action plan	Yes (2002/2010) / Yes
Excise tax on beer / wine / spirits	Yes / Yes / Yes
National legal minimum age for off-premise sales of alcoholic beverages (beer / wine / spirits)	18 / 18 / 18
National legal minimum age for on-premise sales of alcoholic beverages (beer / wine / spirits)	18 / 18 / 18
Restrictions on on-/off-premise sales of alcoholic beverages: Hours, days / places, density Specific events / intoxicated persons / petrol stations	No, No / Yes, No Yes / Yes / No

National maximum legal blood alcohol concentration (BAC) when driving a vehicle (general / young / professional), in %	Zero tolerance
Legally binding regulations on alcohol advertising / product placement	Yes / Yes
Legally binding regulations on alcohol sponsorship / sales promotion	Yes / No
Legally required health warning labels on alcohol advertisements / containers	No / No
National government support for community action	Yes
National monitoring system(s)	No